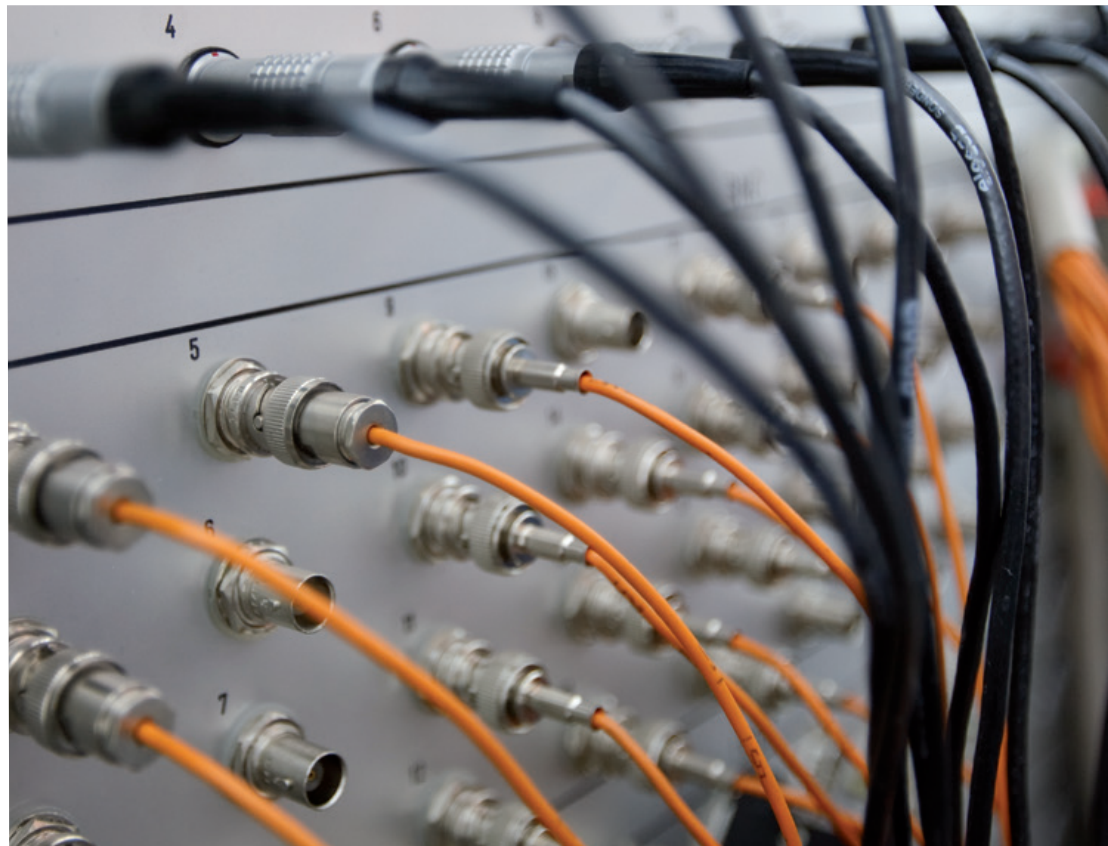


Engineering Center Steyr



Engineering Integration Base

- EIB basic
- EIB PDM Interface
- EIB SAP Integration
- EIB Input Output

 **EIB** software

ENGINEERING INTEGRATION BASE

eib.ecs.steyr.com

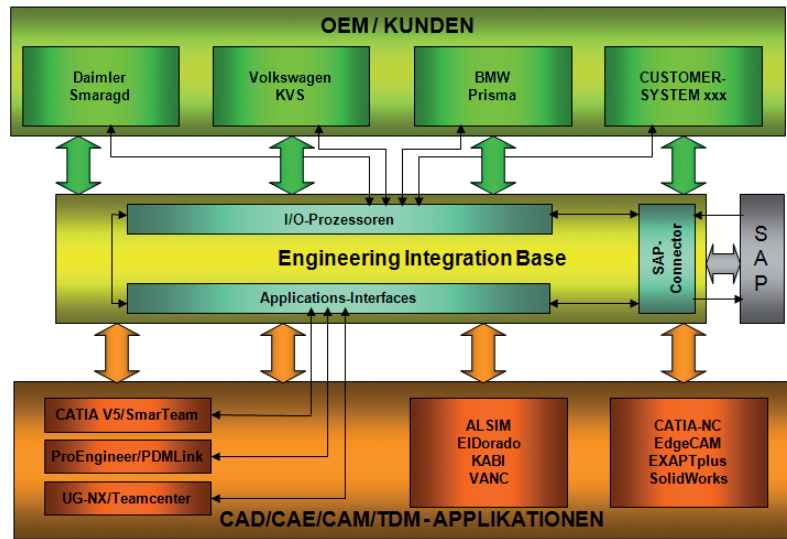
Good integration between product lifecycle management, ERP and CAD/CAM systems is the prerequisite for an effective development and production process. This is particularly true for distributed developments beyond departmental and company boundaries.

The challenge is to find a way to integrate various systems from a broad range of manufacturers into a common data exchange platform. This is all the more true considering that the software manufacturers follow their own objectives and therefore place little value on inter-usability and data exchange between the competitive systems. With EIB we strive to improve this situation and provide solutions to many known tasks.

Architecture

The basic principle behind EIB is to establish connectors between PLM, CAD/CAM, CAE systems and a neutral exchange platform. This neutral exchange platform then allows a star-shaped dataflow pattern from one connected system to all others. Thus data from, e.g., geometry-generating systems can be made available to geometry-utilizing systems, as well as PLM and ERP systems. The neutral exchange platform isolates connected systems from each other, thus it becomes easy:

- To integrate a new system, because only the connector for this system has to be developed in order to gain access to all other systems.
- To replace one system with another system.
- To cope with new system releases.



Integration strategy for customers and systems

EIB SAP Integration Module

- Use one unique identification for engineering and manufacturing data
- Manage engineering bill of material and manufacturing bill of material
- Support of the whole PLM process at minimum cost for design engineers
- Deliver 3D and 2D viewing data to SAP
- Support of the PLM release process

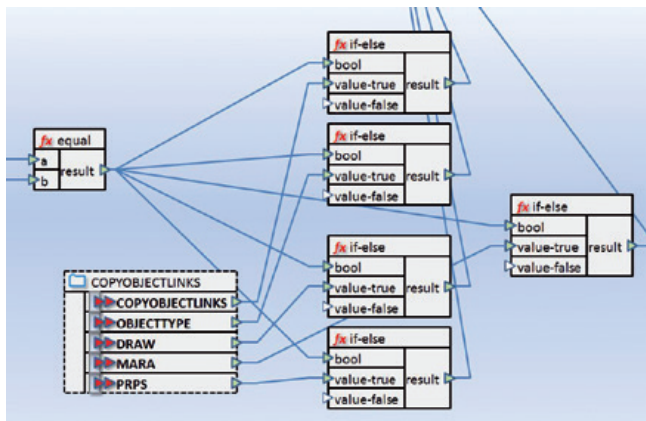
EIB Input/Output-Process

Import Features:

- Import documents (CAD, Office, ...) from customer and suppliers link to modules
- Support of different import methods
 - Automatic OEM dependent import
 - Semi - automatic configurable default import with different import actions (New, Update, Reuse, Version)

Benefits

- Investment security is given by (1) the use of up-to-date technologies such as .NET and Java, (2) a modular system architecture, and (3) a very powerful configuration mechanism. Microsoft Windows is supported as operating system.
- Improvement of the quality as the product data can be provided faster locally and across locations to parallel and following processes and systems
- Maximum data availability and quality
- Reduction of development time, costs and change management cycles
- Automation from standard actions (conversion, data exchange, ...) up to support of globally networked development processes.
- Enables innovations by highly networked and integrated systems
- Increase of competitiveness of the location



Mapping of data

Head Office:

Austria: Magna Powertrain
Engineering Center Steyr GmbH & Co KG
Steyrer Strasse 32, 4300 St. Valentin

Johannes Enzendorfer
Phone: +43 7435 501 2252
Fax: +43 7435 501 2255
johannes.enzendorfer@ecs.steyr.com